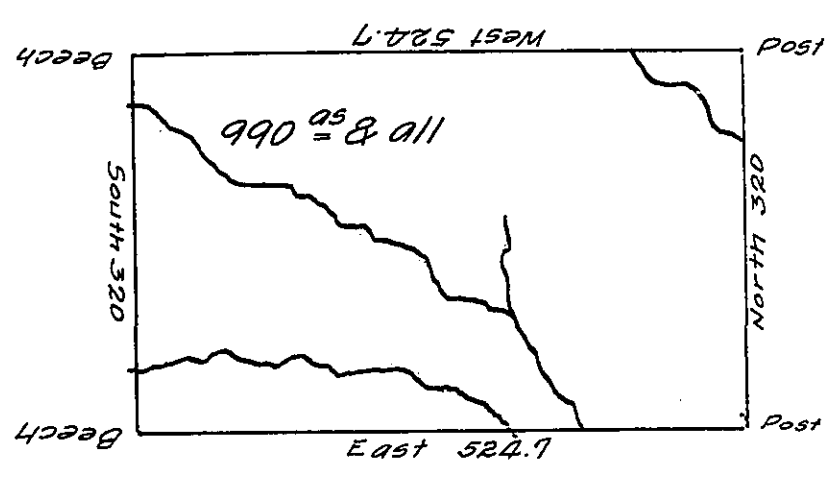


FORM No 1.

N^o 6

N^o 2409

N^o 2408



N^o 2440

N^o 2411

Situate two Miles West of Coronada Creek and Seventeen Miles South of the State Line in North^d County containing 990 Acres and the Usual Allowance for Roads &c. Surveyed July 15th 1793 for Wilhem Willink, Nicolaas Van Stapheret, Christiaan Van Eighen, Hendrick Vollenhoven, and Rutger San Schemmel-penninch in persewance of a Warrant N^o 2410 bearing date December 12th 1792

John Canan D.S.

Daniel Brodhead Esq. S.G.

IN TESTIMONY that the above is a copy of the original remaining on file in the Department of Internal Affairs of Pennsylvania, made conformably to an Act of Assembly approved the 16th day of February, 1833, I have hereunto set my Hand and caused the Seal of said Department to be affixed at Harrisburg, this thirty first day of May 1907

Henry Howell
 Secretary of Internal Affairs.